



## T-HUET INSTRUCTIONS

Welcome to SCLTC-Young Memorial. Thank you for choosing SCLTC-Young Memorial for your training needs. Below are instructions you will need to successfully complete this course.

**Training day(s):** 1 day

**Time:** 7:30 am – 3:30 pm

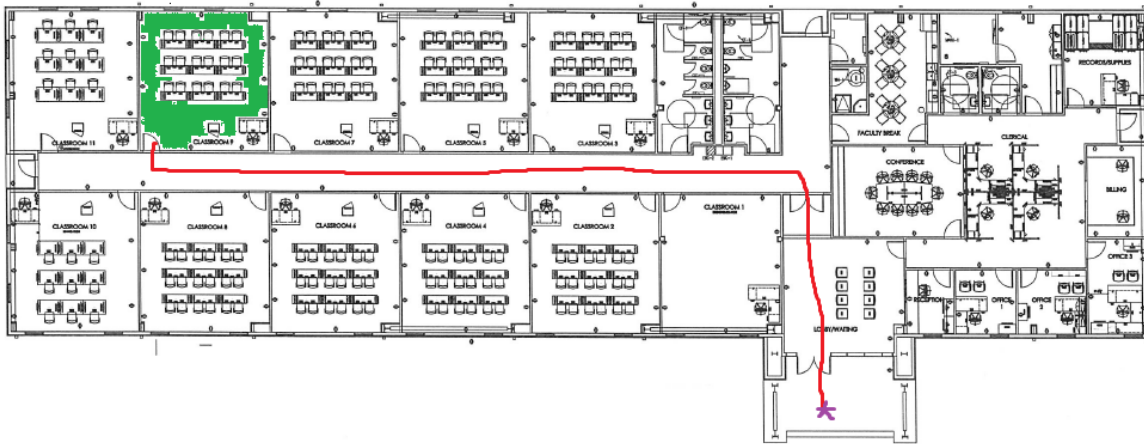
**Location:** Report to:  
 Hugh & Brynes Marine & Petroleum  
 Safety Training Center (Theory)  
 3225 Youngs Road  
 Morgan City, LA 70380

Practical Assessment for water portion shall be done at 900 Youngs Road, Morgan City, LA 70380

### Requirements

- (1) State or Federal Identification
- (2) You must be physically fit to perform assessments
- (3) Physical and Stressful Demands of the T- HUET
  - A) Training and/or assessment activities contained within this Standard may include physically demanding and potentially stressful elements. All personnel who participate in such activities must be physically and mentally capable of participating fully.
  - B) Undergoes medical screening by completing an appropriate medical screening form provided by the OPITO-approved center (a list of medical conditions which could be included in a medical screening form is available from OPITO).
  - C) The responsibility for declaring any current or pre-existing medical conditions that could have adverse effects to the individual's state of health while undertaking the training and/or assessment activities lies with the delegate/candidate and/or company sponsoring the delegate.
  - D) Where doubt exists regarding the fitness of any delegate/candidate, the OPITO-approved Center should direct the individual to consult a medical officer familiar with the nature and extent of the training.

**Class Room: Room 7**



**PPE needed:**

- (1) Swimming trunks (coveralls will be issued to you)
- (2) Shoes to swim in (diving booties or tennis shoes)
- (3) Towel
- (4) Bag for wet clothing

## Driving Directions & Map

### The college can be reached from the following three routes:

#### From Lafayette, Hwy 90 East:

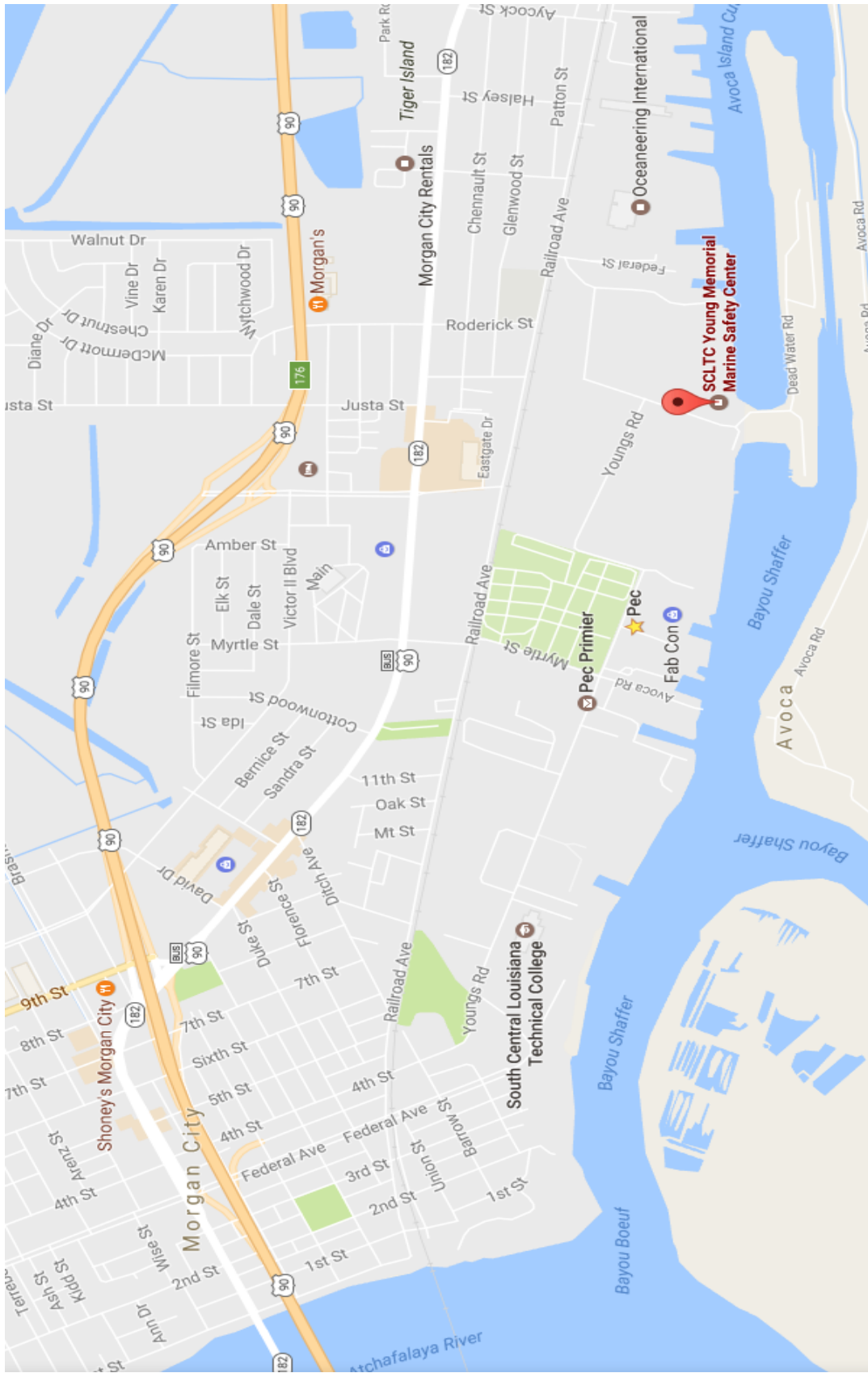
1. From the Hwy 90 bridge into Morgan City take the **Federal Avenue Exit**.
2. At the base of the **Federal Avenue Exit** take a left onto **Freret Street**.
3. On **Freret Street** Proceed a half-block and at the first stop sign take a right onto **Fourth Street** proceeding approximately two miles once you go over the railroad tracks.
4. You will proceed through a four way-stop and continue past the grave yard, treatment plant until the road ends at Woodlawn and Youngs.
5. Take a right to continue on Youngs and the campus will be on the left-hand.

#### From New Orleans, Hwy 90 West:

1. Coming from **New Orleans/Houma** area: Proceed continuing from Highway 90. You will go through several towns (Houma, Gibson, Amelia, into Morgan City)
2. As you enter Morgan City (still on Hwy. 90) take the **Martin Luther King Blvd**.
3. Once at the base of the **Martin Luther King Blvd Exit** take a left and proceed one-half mile to a traffic light that is **Hwy 90 West**.
4. At the traffic light take right onto **Hwy 90 West** for one-third a mile to the next traffic light which is **Myrtle Street**.
5. Take a left onto **Myrtle Street** and proceed one-quarter mile over the railroad tracks.
6. At the first stop sign, directly after the railroad tracks, take a left onto **Youngs Road** and proceed approximate 1 mile. Take a right when the road ends at Woodlawn and Youngs. Proceed one half mile and campus is on left.

#### From Baton Rouge, Hwy 70:

1. Leave **Baton Rouge** via the **Mississippi River Bridge**, get in the right lanes so as to take the **Plaquemine/Highway 1 South Exit**. The Exit will wind under the bridge where you will proceed on **Highway 1 South**.
2. On **Highway 1 South**, proceed 22 miles (through **Brusley, Addis, Plaquemine**) to **White Castle** where you will take a right onto **Highway 69**.
3. Once on **Highway 69**, proceed 11.5 miles where the road will come to **Highway 70** junction.
4. Take a right onto **Highway 70** toward **Pierre Part 11.5** miles to cross the **Bell River Bridge**.
5. Proceed right over the **Bell River Bridge**. Directly after the bridge will come a junction where you will proceed left on **Highway 70** and go 14 Miles.  
(This will take you around Lake End Park veering left)
6. As you enter **Morgan City**, at the very first traffic light (near Lakewood Hospital, Exxon and Rite Aid) take a left onto **Victor II Blvd**.
7. Once on **Victor II Blvd** proceed for approximately one mile and turn right onto **Myrtle Street**.
8. While on **Myrtle Street** (near the Police Station) proceed through one traffic light, and go over the railroad tracks for approximately a quarter mile to first stop sign.
7. At the first stop sign, directly after the railroad tracks, take a left onto **Youngs Road** and proceed approximate 1 mile. Take a right when the road ends at Woodlawn and Youngs. Proceed one half mile and campus is on left.



## Learning Outcomes of the Tropical HUET

The learning outcomes are specified for each of the following modules; they are:

### MODULE 1 Learning Outcomes Helicopter Safety and Escape

To successfully complete this module, delegates must be able to **demonstrate**:

- (1) Donning an aviation lifejacket.
- (2) Actions to take in preparation for a helicopter ditching and an emergency landing.
- (3) Actions following a controlled emergency descent to a dry landing with evacuation via a nominated exit.
- (4) Actions following a controlled ditching on water (including operation of a push out window on instruction from aircrew) and evacuate through a nominated exit to an aviation liferaft.
- (5) Assist others where possible in carrying out **initial** actions on boarding the aviation liferaft, to include mooring lines, deploying the sea anchor, raising the canopy and raft maintenance.
- (6) Escaping through a window opening which is underwater, from a partially submerged helicopter (without operation of a push out window).
- (7) Escaping through a window opening which is underwater, from a partially submerged helicopter (including the operation of a push out window).
- (8) Escaping through a window opening which is underwater, from a capsized helicopter (without operation of a push out window).
- (9) Escaping through a window opening which is underwater, from a capsized helicopter (including the operation of a push out window)
- (10) Inflating an aviation lifejacket and deploying a spray visor
- (11) Boarding an aviation liferaft from water.
- (12) Being rescued by one of the recognized methods available offshore and survivor actions following rescue

### MODULE 2 Learning Outcomes Sea Survivals

To successfully complete this module, delegates must be able to **demonstrate**:

- (1) Donning of a permanent buoyancy lifejacket prior to use in an emergency.
- (2) The correct actions when mustering and boarding a survival craft (TEMPSC) as a passenger during launching operations.
- (3) Fitting of a helicopter strop and correct body posture during winching.
- (4) Individual and group sea survival techniques, to include: swimming, getting into Heat Escape Lessening Position (HELP), wave-slap protection, towing, chain, huddle and circle.

**Additional information can be obtained from:**

<http://www.opito.com>

[www.scl.edu](http://www.scl.edu)

For international calling assistance: <http://www.areacodehelp.com/calling-tools/international-calling.php>

## Campus Locations

*Young Memorial Campus  
900 Youngs Road  
Morgan City, La 70380  
Phone: (985) 380-2957  
Campus Dean: Anthony Baham*

*Hugh & Brynes Marine &  
Petroleum Safety training Center  
3225 Youngs Road  
Morgan City, La. 70380  
Phone: (985) 385-7036 or 380-2457  
Assistant Dean: Captain Carl Moore*